

Microtek ScanWizard™ Pro



Kodak *ds*
digital science



MICROTEK SCANWIZARD PRO IS AN INTUITIVE, EASY-TO-MASTER AND INCREDIBLY VERSATILE PROFESSIONAL SCANNING SOFTWARE APPLICATION CREATED BY THE COLOR SCIENTISTS, PROGRAMMERS AND ENGINEERS WHO PIONEERED DESKTOP SCANNING. IT FEATURES AUTOMATIC DYNAMIC RANGE CONTROL THAT DELIVERS INCREDIBLY ACCURATE IMAGE REPRODUCTION FOR USERS WHO NEED QUICK RESULTS; AS WELL AS ADJUSTABLE DYNAMIC RANGE, GAMMA CURVES, CONTRAST, COLOR TINT, UNSHARP MASKING AND MORE, TO MANIPULATE SCANS AND BRING OUT THE CRITICAL DETAIL THAT PROFESSIONALS IN IMAGING DEMAND.

SCANWIZARD PRO ALSO FEATURES ON-SCREEN PROOFING WITH LINKS TO LOADED OR PROFILED ICC DEVICES (MONITORS, PRINTERS, AND PROOFERS), COLOR TAGS ON ANY POINT IN THE IMAGE WITH QUANTITATIVE FEEDBACK IN A VARIETY OF COLOR SPACES INCLUDING, CMYK, RGB AND CIE LAB. SCANWIZARD'S EDITABLE AND DOWNLOADABLE SCAN JOB FILES ARE SPECIFICALLY SUITED TO MULTI-USER, BATCH SCANNING ENVIRONMENTS AND HELP TO STREAMLINE THE ENTIRE IMAGING WORKFLOW, FUNCTIONALITY IDEAL FOR AD AGENCIES, DESIGN FIRMS, CATALOGERS AND SMALL TO MID-SIZE SERVICE BUREAUS.

- Advanced Image Correction
- Intelligent Batch Scanning
- User customizable settings
- Kodak® Digital Science™ color management software
- ColorSync® compatible (Mac)

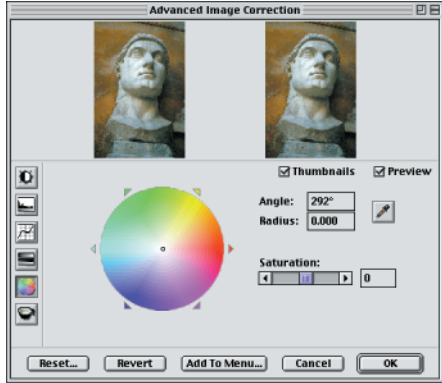
MICROTEK

artix
MICROTEK PROFESSIONAL IMAGING

Intuitive Software that Streamlines Workflow.

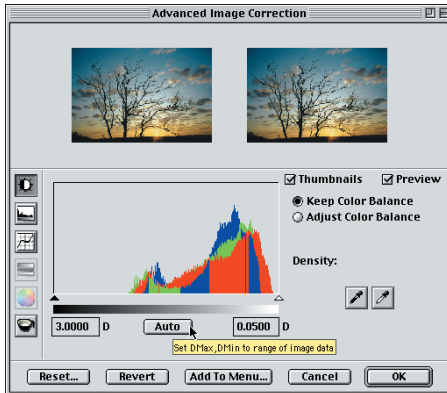
MICROTEK'S SCANWIZARD PRO AND SCANWIZARD PRO TX

are professional scanning applications that give novice or expert users the tools necessary to deliver amazingly accurate scanned images from their originals. The intuitive interface is designed for quick results or for experimentation and the opportunity to manipulate images to deliver the results that professionals demand. Virtually every tool in ScanWizard Pro enables users to override automatic settings and create their own unique adjustments which can be saved and applied to other images again and again.



EASY COLOR ADJUSTMENT

The color tint wheel in the Advanced Image Correction window enables the user to increase or decrease overall color saturation, as well as add or remove color casts particularly useful with reflective or transparency originals that have aged over time.



AUTOMATIC OR USER-SELECTABLE

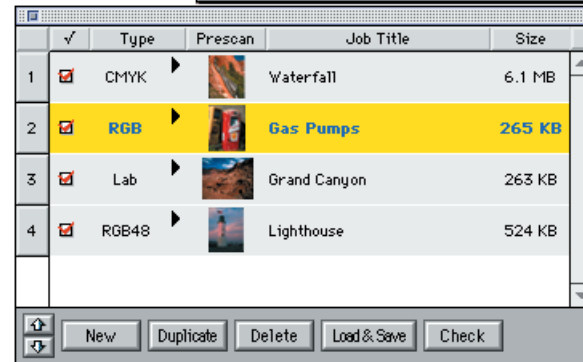
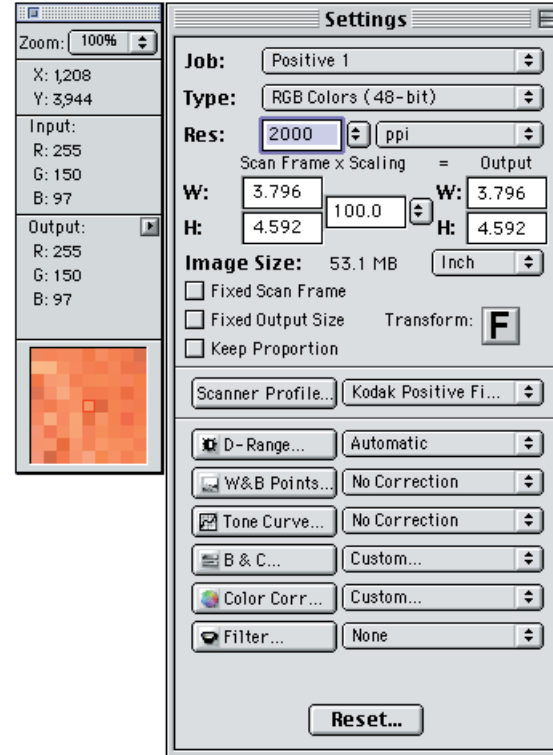
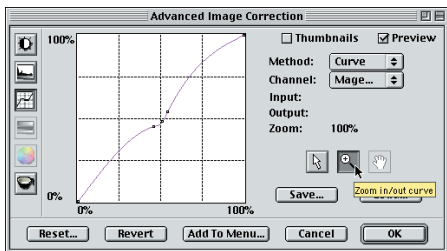
WHITE & BLACK POINT CONTROL

ScanWizard Pro has been engineered to immediately find the whitest and blackest point on any previewed image, but it also gives the user the control to set those points manually to bring out or diminish detail and control the images overall tonal level.

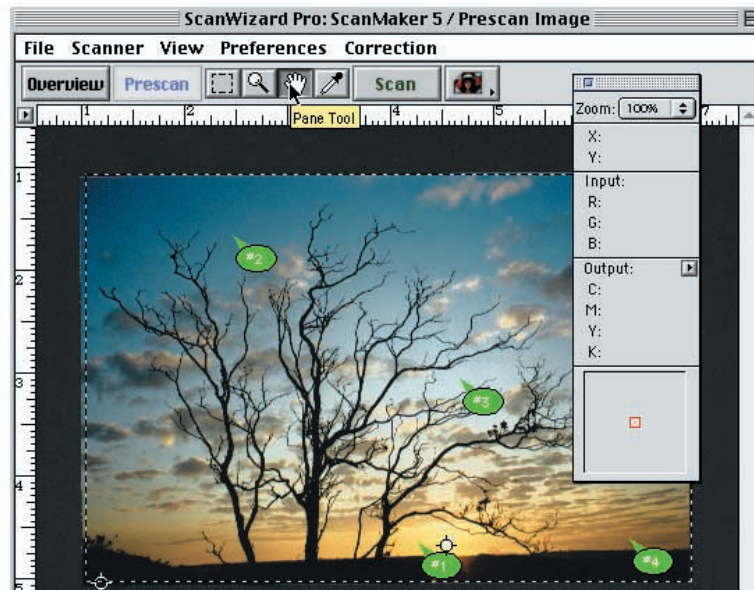


COLOR CONTROL IN PRACTICAL WORKING SPACES

Any point in the prescan can be displayed numerically with on-screen color tags (Macintosh version, below) in CMYK, RGB or LAB, as well as showing "before" and "after" readings simultaneously after color has been adjusted. In addition, the CMYK or RGB curves (left) can be manipulated in each channel to give users incredibly precise control at any level.



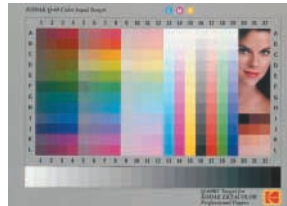
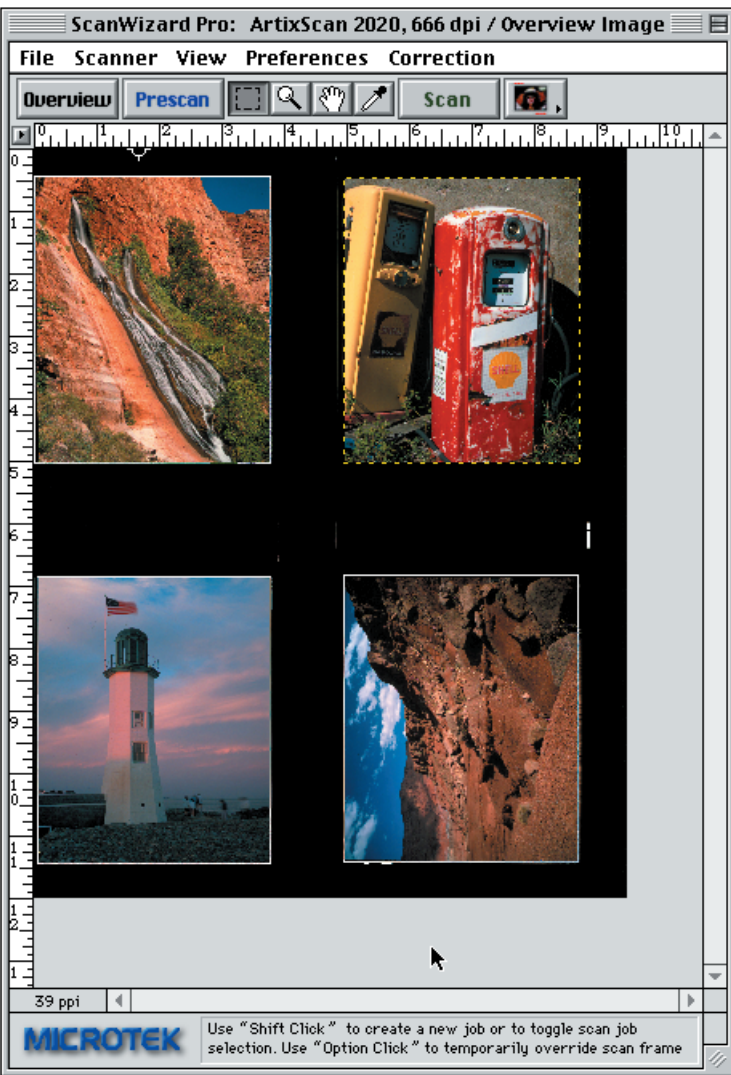
Tag #3	Tag #2
X: 4.676	X: 2.473
Y: 3.054	Y: 1.662
C: 12%/12%	C: 41%/41%
M: 5%/5%	M: 22%/22%
Y: 17%/17%	Y: 5%/5%
K: 20%/20%	K: 39%/39%
Tag #1	Tag #4
X: 4.270	X: 6.324
Y: 4.649	Y: 4.608
C: 0%/0%	C: 0%/0%
M: 21%/21%	M: 41%/41%
Y: 56%/56%	Y: 65%/65%
K: 7%/7%	K: 39%/39%



Built-In Color Management for Picture Perfect Results.

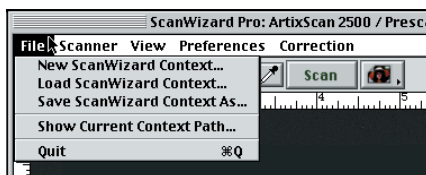
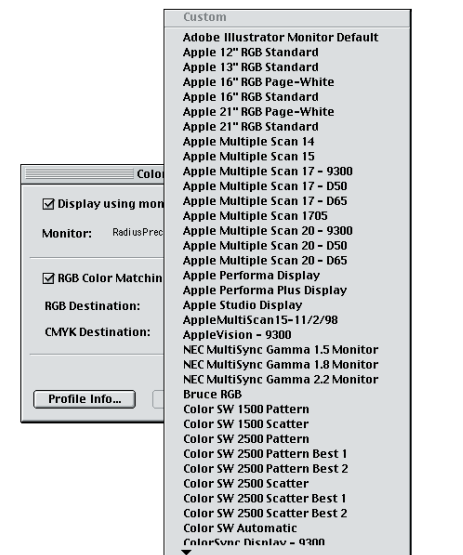
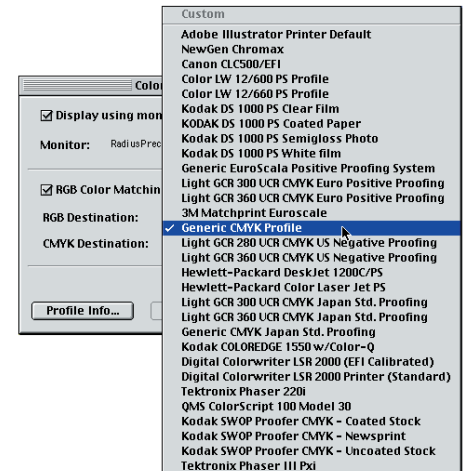
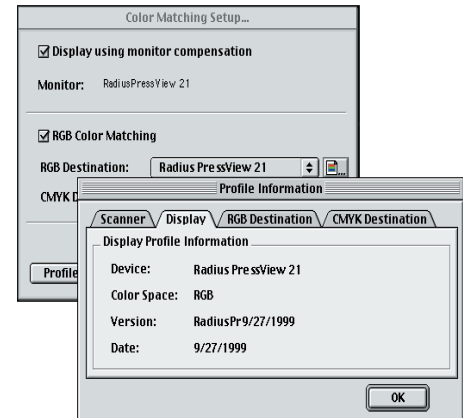
COLOR MANAGEMENT BUILT-IN FOR ACCURATE COLOR IN AND OUT.

Using Kodak Digital Science color management software, ScanWizard Pro and ScanWizard Pro TX links to other ICC devices on users' systems for more accurate color management throughout the entire image acquisition and enhancement process. ScanWizard Pro is also ColorSync compatible on Macintosh systems. And even though ScanWizard Pro includes embedded look up tables for proper calibration, it also includes the Microtek Scanner Profiler to enable users to calibrate their scanner to a standard IT-8 target. A Kodak Q60 target (reflective and/or film) is included with Microtek scanners that are supported by ScanWizard Pro.



UNLIMITED & ON-THE-FLY PROFILE LINKING

ScanWizard Pro includes over 25MB of ICC profiles to link to monitors, inkjet or commercial offset printers, proofers or specific color spaces to supplement the profiles already in a user's system. But users can also add new industry or custom profiles at any time even while their working in ScanWizard Pro. Microtek's scanners, already respected industry-wide for their color accuracy, combined with this level of color management ensures that users get images that are as true to their originals as possible.



SCANWIZARD CONTEXT FILES

Users can save all of their preview and final scan settings to any folder or directory on their hard drive or network. Then, when they want to apply the same settings to similar images they simply retrieve the ScanWizard Context file that's been stored.

SPECIFICATIONS

Originals

- Color, grayscale, or line art
- Transmissive or reflective
- Continuous tone or halftone
- Positive or negative

Scanning and Color Modification Tools

- Automatic, manual/programmable settings (highlight and shadow values, color values, dynamic range, contrast and more)
- Editable, downloadable gamma curves
- Color control with ability to reduce or increase saturation; introduce or eliminate color cast
- Editable CMYK, High-bit RGB, RGB, LAB curves
- Intelligent auto-dynamic range control
- Embedded negative film look-up profiles for leading film stocks (Kodak, Agfa, Fuji, etc.)
- Multi-level unsharp masking
- Densitometer (eyedropper) for CMYK, RGB, and LAB values on any selected point in the previewed image
- "Before" and "After" on-screen feedback of all prescan settings
- Scan context files preserve modifiable record of all preview settings
- Resizable preview window
- Programmable scan frames to speed up high-volume workflow

CMYK Control & ICC Functionality

- Instant conversion of scans to CMYK
- On-the-fly links to third-party ICC-compatible output profiles
- Real-time monitor soft proofing based on CMYK or RGB values

Additional Features

- Batch scanning with individual image settings
- Closed-loop RGB output calibration with Microtek Scanner Profiler software
- Kodak® Q60 calibration target included
- Networkable distribution of all preview or scan context files

Output File Formats

- TIFF Lab, RGB, CMYK, Gray scale, Line art
- EPS RGB, CMYK
- DCS
- JPEG
- BMP

Macintosh System Requirements

- Power Macintosh
- System 8.1 or higher
- Apple ColorSync 2
- 30 MB free space on hard disk
- Min. 64 MB free RAM
- 17" or larger color monitor
- 24-bit monitor recommended

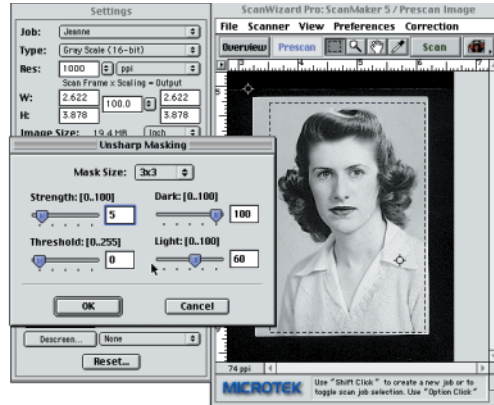
Windows System Requirements

- Pentium (or equivalent) processor
- Windows NT 4.0 or higher, Windows 98 or Windows 95
- 30 MB free space on hard disk
- Min. 64 MB free RAM
- 17" or larger color monitor
- 24-bit video card



MULTI-LEVEL UNSHARP MASKING

ScanWizard Pro's Unsharp Masking control panel gives users the ability to fine tune sharpness to their satisfaction. And like the other controls and filters in ScanWizard Pro, they can see immediately in "Before" and "After" screens if the filter or effect has been applied.



HIGH-BIT SCANNING

ScanWizard Pro is also engineered to take advantage of Microtek's 36-bit, 42-bit scanners, giving the user the option to capture as much image data as possible and delivering that data to the host image-editing application. The benefit, of course, is holding on to critical image detail even after the scanned file has been sampled down to 24-bit data.

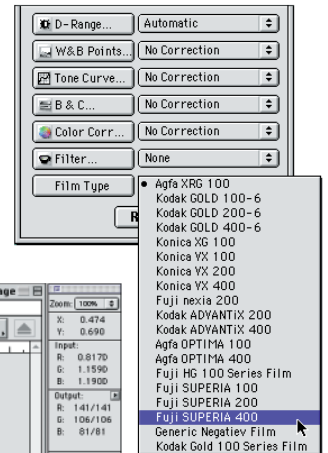


SCANWIZARD PRO TX FOR DEDICATED FILM SCANNERS

Microtek's software teams re-designed and re-engineered the user interface and some of ScanWizard Pro's features to accommodate the film formats most likely to be scanned on its dedicated film scanners, like the ArtixScan 4000t.

NEGATIVE FILM PROFILE SUPPORT

When scanning in the negative film mode, ScanWizard Pro gives users the ability to link to any one of 18 different film stocks. When selected the color cast associated with the chosen stock is instantly eliminated and a positive rendering of the image appears in the overview or prescan window.



For sales or dealer inquiries contact:

Microtek Lab, Inc.
3715 Doolittle Drive
Redondo Beach, CA 90278 USA
Sales phone: 1-800-641-4160
Fax: 1-310-297-5050
or email: microtek@artix.com

MICROTEK

artix
MICROTEK PROFESSIONAL IMAGING